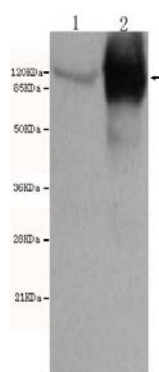




LEPR Antibody

E220034

Catalog Number	E220034-1, E220034-2
Amount	50µg/50µl, 100µg/100µl
Description	Mouse monoclonal IgG to LEPR
GeneBank ID	NM_002303.3
Immunogen	Recombinant fragment of Human LEPR (N-terminus).
Reacts with	Hu
Tested applications	Recommended dilutions. ELISA: 1/5000 - 1/20000. WB: 1/100-1/2000.
Cellular localization	Plasma membrane
Relevance	Leptin receptor (LEPR, OB-R) is a type I cytokine receptor family protein with significant amino acid sequence identity with gp130, G-CSF receptor, and LIF receptor. The transcript was reported to be expressed predominantly in regions of the hypothalamus previously thought to be important in body weight regulation. OB-R binds leptin with high affinity and is a potent leptin antagonist.
Purity	Protein G-Sepharose affinity purified.
Storage buffer	Preservative: 0.02% Sodium Azide and 50% glycerol, 1% BSA ,PBS, pH7.4.
Form	Liquid
Storage instructions	Aliquot and store at -20°C. Avoid repeated freeze / thaw cycles.



LEPR antibody (E220034) at 1/500 dilution. Lane 1: Mouse brain tissue 30ug/Lane, Lane 2: Mouse lung tissue 30ug/Lane, Predicted band size: 132Kda, Observed band size: 120Kda.

For Research Use Only