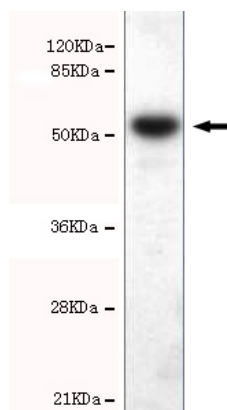




CHD1 Antibody

E220035

Catalog Number	E220035-1, E220035-2
Amount	50µg/50µl, 100µg/100µl
Description	Mouse monoclonal IgG to CHD1
GeneBank ID	NM_001270
Immunogen	Recombinant fragment of Human CHD1 (N-terminus).
Reacts with	Hu
Tested applications	Recommended dilutions. ELISA: 1/5000 - 1/20000. WB: 1/100 - 1/2000.
Cellular localization	Nucleus
Relevance	The chromodomain helicase DNA binding protein 1 (CHD1) belongs to the CHD family of proteins which is characterized by the presence of chromo (chromatin organization modifier) domains and SNF2-related helicase/ATPase domains. CHD1 alters gene expression possibly by modification of the chromatin structure thus altering access of the transcriptional apparatus to its chromosomal DNA template.
Purity	Protein G-Sepharose affinity purified.
Storage buffer	Preservative: 0.02% Sodium Azide, 50% glycerol, 1% BSA, PBS, pH7.4.
Form	Liquid
Storage instructions	Aliquot and store at -20°C. Avoid repeated freeze / thaw cycles.



CHD1 antibody (E220035) at 1/2000 dilution interacts with recombinant CHD1 protein with a GST tag.
Predicted band size: 52Kda, Observed band size: 52Kda.

For Research Use Only