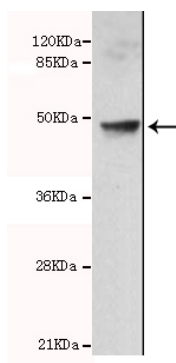




PPP2CA Antibody

E220036

Catalog Number	E220036-1, E220036-2
Amount	50µg/50µl, 100µg/100µl
Description	Mouse monoclonal IgG to PPP2CA
GeneBank ID	NM_002715
Immunogen	Recombinant full length of Human PPP2CA.
Reacts with	Hu
Tested applications	Recommended dilutions. ELISA: 1/5000 - 1/20000. WB: 1/100-1/2000 .
Cellular localization	Cytoplasmic
Relevance	This gene encodes the phosphatase 2A catalytic subunit. Protein phosphatase 2A is one of the four major Ser/Thr phosphatases, and it is implicated in the negative control of cell growth and division. It consists of a common heteromeric core enzyme, which is composed of a catalytic subunit and a constant regulatory subunit, that associates with a variety of regulatory subunits. This gene encodes an alpha isoform of the catalytic subunit.
Purity	Protein G-Sepharose affinity purified.
Storage buffer	Preservative: 0.02% Sodium Azide, 50% glycerol, 1% BSA, PBS, pH7.4.
Form	Liquid
Storage instructions	Aliquot and store at -20°C. Avoid repeated freeze / thaw cycles.



PPP2CA antibody (E220036) at 1/2000 dilution interacts with recombinant PPP2CA protein with a GST tag. Predicted band size: 45Kda, Observed band size: 45Kda.

For Research Use Only