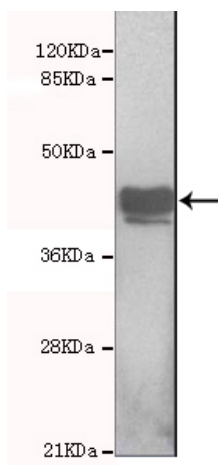




## KDM6A Antibody

**E220043**

<b>Catalog Number</b>	E220043-1, E220043-2
<b>Amount</b>	50µg/50µl, 100µg/100µl
<b>Description</b>	Mouse monoclonal IgG to KDM6A
<b>GeneBank ID</b>	NM_021140
<b>Immunogen</b>	Recombinant fragment of Human KDM6A (N-terminus).
<b>Reacts with</b>	Hu
<b>Tested applications</b>	Recommended dilutions. ELISA: 1/5000 - 1/20000. WB: 1/100-1/2000.
<b>Cellular localization</b>	Nucleus
<b>Relevance</b>	KDM6A is an 154 kDa ubiquitously transcribed X chromosome tetratricopeptide repeat protein that is predicted to interact with TLE1. KDM6A contains a jumonji C domain and specifically demethylates di and tri methyl histone H3 at K27.
<b>Purity</b>	Protein G-Sepharose affinity purified
<b>Storage buffer</b>	Preservative: 0.02% Sodium Azide, 50% glycerol, 1% BSA, PBS, pH7.4.
<b>Form</b>	Liquid
<b>Storage instructions</b>	Aliquot and store at -20°C. Avoid repeated freeze / thaw cycles.



KDM6A antibody (E220043) at 1/2000 dilution interacts with recombinant KDM6A protein with a GST tag. Predicted band size: 40Kda. Observed band size: 40Kda.

**For Research Use Only**