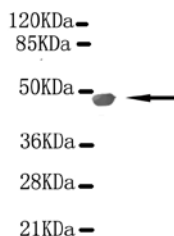




PKM2 Antibody

E220044

Catalog Number	E220044-1, E220044-2
Amount	50µg/50µl, 100µg/100µl
Description	Mouse monoclonal IgG to PKM2
GeneBank ID	NM_182471.1
Immunogen	Recombinant fragment of Human PKM2 (N-terminus).
Reacts with	Hu
Tested applications	Recommended dilutions. ELISA: 1/5000 - 1/20000. WB: 1/100-1/2000.
Relevance	PKM2 (pyruvate kinase, muscle) catalyzes the production of phosphoenol pyruvate from pyruvate and ATP. PKM2 has been shown to interact with thyroid hormone, and thus may mediate cellular metabolic effects induced by thyroid hormones. It has been found to bind Opa protein, a bacterial outer membrane protein involved in gonococcal adherence to and invasion of human cells, suggesting a role of this protein in bacterial pathogenesis. Three alternatively spliced transcript variants encoding two distinct isoforms have been reported.
Purity	Protein G-Sepharose affinity purified.
Storage buffer	Preservative: 0.02% Sodium Azide, 50% glycerol, 1% BSA, PBS, PH7.4.
Form	Liquid
Storage instructions	Aliquot and store at -20°C. Avoid repeated freeze / thaw cycles.



PKM2 antibody (E220044) at 1/2000 dilution interacts with recombinant PKM2 protein with a DsbA tag. Predicted band size: 45KDa. Observed band size: 45KDa.

For Research Use Only