

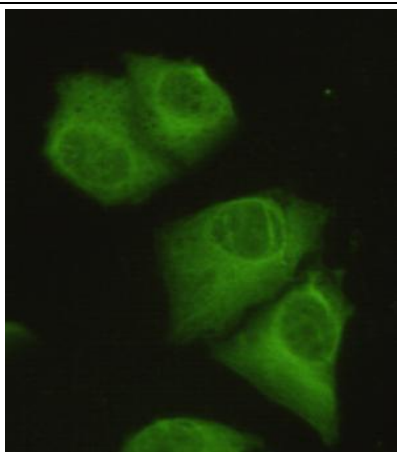


## protein phosphatase 2A Antibody

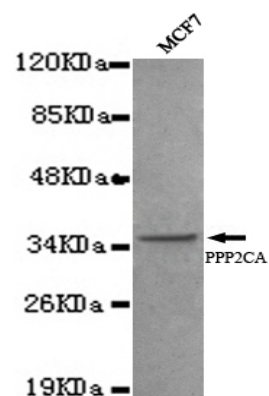
E2200450

<b>Catalog Number:</b>	E2200450
<b>Size:</b>	100ug
<b>Host:</b>	Mouse
<b>Formulation:</b>	Purified mouse monoclonal in buffer containing 0.1M Tris-Glycine (pH 7.4, 150 mM NaCl) with 0.2% sodium azide, 50% glycerol
<b>Sensitivity:</b>	This antibody detects endogenous levels PP2A-alpha (N-terminus) and does not cross-react with related proteins.
<b>Entrez summary:</b>	This gene encodes the phosphatase 2A catalytic subunit. Protein phosphatase 2A is one of the four major Ser/Thr phosphatases, and it is implicated in the negative control of cell growth and division. It consists of a common heteromeric core enzyme, which is composed of a catalytic subunit and a constant regulatory subunit, that associates with a variety of regulatory subunits. This gene encodes an alpha isoform of the catalytic subunit.
<b>UniPort summary</b>	PP2A can modulate the activity of phosphorylase B kinase casein kinase 2,
<b>Function:</b>	mitogen-stimulated S6 kinase, and MAP-2 kinase. Cooperates with SGOL2 to protect centromeric cohesin from separase-mediated cleavage in oocytes specifically during meiosis I (By similarity). Can dephosphorylate SV40 large T antigen and p53/TP53. Dephosphorylates SV40 large T antigen, preferentially on serine residues 120, 123, 677, and perhaps 679. The C subunit was most active, followed by the AC form, which was more active than the ABC form, and activity of all three forms was strongly stimulated by manganese, and to a lesser extent by magnesium. Dephosphorylation by the AC form, but not C or ABC form is inhibited by small T antigen
<b>Immunogen:</b>	Purified recombinant human PP2A-alpha (N-terminus) protein fragments expressed in E.coli.
<b>Antibody Type:</b>	Monoclonal antibody
<b>Isotype:</b>	IgG2a
<b>Purified method:</b>	Affinity purified
<b>Subcellular location:</b>	Cytoplasm. Nucleus
<b>Reactivity:</b>	H
<b>Applications:</b>	WB, ICC
<b>Molecular Weight:</b>	35kDa
<b>UniProt number:</b>	P67775
<b>GeneBank ID:</b>	NM_002715
<b>Gene symbol:</b>	RP-C; PP2Ac; PP2CA; PP2Calpha
<b>Alternate names:</b>	RP-C; PP2Ac; PP2Calpha; Protein Phosphatase 2 alpha

**For Research Use Only**



Immunocytochemistry of HeLa cells using anti-PP2A-alpha (N-terminus) antibody diluted 1:50.



Western blot detection of PP2A-alpha(N-terminus) antibody in MCF7 cell lysates using PP2A-alpha(N-terminus) antibody (1:1000 diluted). Predicted band size:35KDa. Observed band size:35KDa.