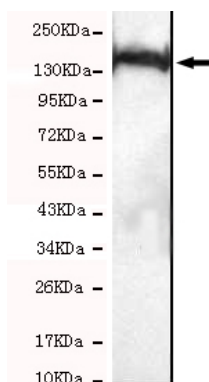




SMC1A Antibody

E220047

Catalog Number	E220047-1, E220047-2
Amount	50µg/50µl, 100µg/100µl
Description	Mouse monoclonal IgG to SMC1A
GeneBank ID	NM_006306
Immunogen	Recombinant fragment of Human SMC1A (N-terminus).
Reacts with	Hu
Tested applications	Recommended dilutions. ELISA: 1/5000 - 1/20000. WB: 1/100-1/2000.
Cellular localization	Nucleus
Relevance	Proper cohesion of sister chromatids is a prerequisite for the correct segregation of chromosomes during cell division. The cohesin multiprotein complex is required for sister chromatid cohesion. This complex is composed partly of two structural maintenance of chromosomes (SMC) proteins, SMC3 and either SMC1L2 or the protein encoded by this gene. Most of the cohesin complexes dissociate from the chromosomes before mitosis, although those complexes at the kinetochore remain. Therefore, the encoded protein is thought to be an important part of functional kinetochores.
Purity	Protein G-Sepharose affinity purified
Storage buffer	Preservative: 0.02% Sodium Azide and 50% glycerol, 1%BSA, PBS, pH7.4.
Storage instructions	Aliquot and store at -20°C. Avoid repeated freeze / thaw cycles.



SMC1A antibody (E220047) at 1/200 dilution. Nuclear extracts of HeLa cell 40ug/Lane. Predicted band size: 150KDa. Observed band size: 150KDa.

For Research Use Only