

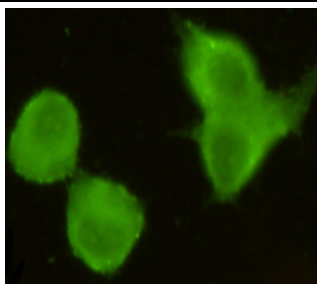


MECT1 / Torc1Antibody

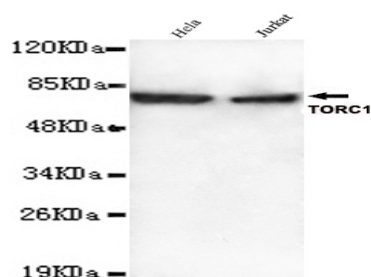
E2200541

Catalog Number:	E2200541
Size:	100ug
Host:	Mouse
Formulation:	Purified mouse monoclonal in buffer containing 0.1M Tris-Glycine (pH 7.4, 150 mM NaCl) with 0.2% sodium azide, 50%,glycerol
Sensitivity:	This antibody detects endogenous levels of TORC1(N-terminus) and does not cross-react with related proteins.
Entrez summary:	null
UniPort summary	Transcriptional coactivator for CREB1 which activates transcription through both consensus and variant cAMP response element (CRE) sites. Acts as a coactivator, in the SIK/TORC signaling pathway, being active when dephosphorylated and acts independently of CREB1 'Ser-133' phosphorylation. Enhances the interaction of CREB1 with TAF4. Regulates the expression of specific CREB-activated genes such as the steroidogenic gene, StAR. Potent coactivator of PGC1alpha and inducer of mitochondrial biogenesis in muscle cells. Also coactivator for TAX activation of the human T-cell leukemia virus type 1 (HTLV-1) long terminal repeats (LTR). In the hippocampus, involved in late-phase long-term potentiation (L-LTP) maintenance at the Schaffer collateral-CA1 synapses (By similarity)
Function:	
Immunogen:	Purified recombinant human TORC1(N-terminus) protein fragments expressed in E.coli.
Antibody Type:	Monoclonal antibody
Isotype:	IgG2b
Purified method:	Affinity purified
Subcellular location:	Cytoplasm. Nucleus
Reactivity:	H
Applications:	WB,FC,ICC,IP
Molecular Weight:	69kDa
UniProt number:	Q6UUV9
GeneBank ID:	NM_015321
Gene symbol:	MECT1; TORC1; WAMTP1
Alternate names:	KIAA0616;CREB regulated transcription coactivator 1;CREB-regulated transcription coactivator 1;CRTC1;CRTC1_HUMAN;FLJ14027;KIAA0616;MECT 1;Mucoepidermoid carcinoma translocated 1;Mucoepidermoid carcinoma translocated protein 1;TORC-1;TORC1;Transducer of CREB protein 1;Transducer of regulated cAMP response element binding protein 1;Transducer of regulated cAMP response element-binding protein (CREB) 1;Transducer of regulated cAMP response element-binding protein 1;WAMTP1;

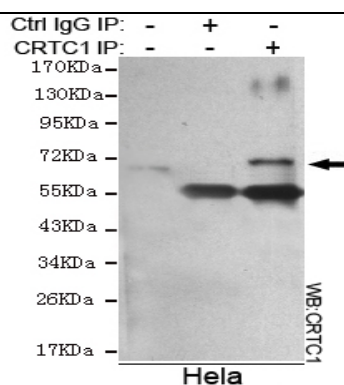
For Research Use Only



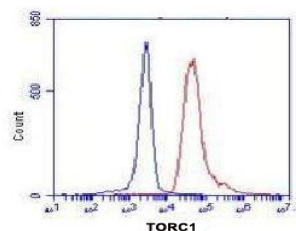
Immunocytochemistry stain of HeLa using TORC1 antibody (1:300).



Western blot detection of TORC1(N-terminus) antibody in HeLa&Jurkat lysates using TORC1(N-terminus) antibody (1:1000 diluted). Predicted band size: 69KDa Observed band size: 69KDa.



Immunoprecipitation analysis of HeLa cell lysate using CRTCl antibody.



Flow Cytometry analysis of K562 cells stained with TORC1(N-terminus) (red, 1/100 dilution), followed by FITC-conjugated goat anti-mouse IgG. Blue line histogram represents the isotype control, normal mouse IgG.