

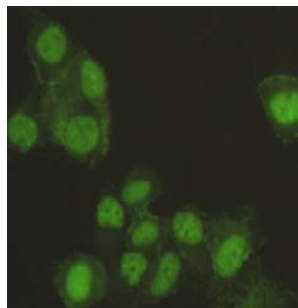


SAFB-1 Antibody

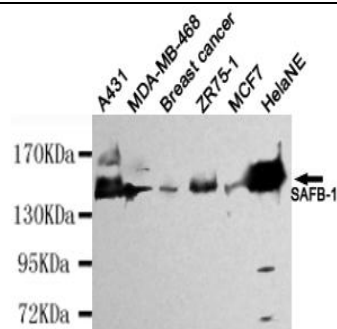
E2200580

Catalog Number:	E2200580
Size:	100ug
Host:	Mouse
Formulation:	Purified mouse monoclonal in buffer containing 0.1M Tris-Glycine (pH 7.4, 150 mM NaCl) with 0.2% sodium azide, 50% glycerol
Sensitivity:	This antibody detects endogenous levels of SAFB-1 and does not cross-react with related proteins
Entrez summary:	This gene encodes a DNA-binding protein which has high specificity for scaffold or matrix attachment region DNA elements (S/MAR DNA). This protein is thought to be involved in attaching the base of chromatin loops to the nuclear matrix but there is conflicting evidence as to whether this protein is a component of chromatin or a nuclear matrix protein. Scaffold attachment factors are a specific subset of nuclear matrix proteins (NMP) that specifically bind to S/MAR. The encoded protein is thought to serve as a molecular base to assemble a 'transcriptosome complex' in the vicinity of actively transcribed genes. It is involved in the regulation of heat shock protein 27 transcription, can act as an estrogen receptor co-repressor and is a candidate for breast tumorigenesis. This gene is arranged head-to-head with a similar gene whose product has the same functions. Multiple transcript variants encoding different isoforms have been found for this gene.
UniPort summary	Binds to scaffold/matrix attachment region (S/MAR) DNA and forms a molecular assembly point to allow the formation of a 'transcriptosomal' complex (consisting of SR proteins and RNA polymerase II) coupling transcription and RNA processing. By similarity. Can function as an estrogen receptor corepressor and can also bind to the HSP27 promoter and decrease its transcription. When associated with RBMX, binds to and stimulates transcription from the SREBF1 promoter. By similarity. Can inhibit cell proliferation.
Function:	
Immunogen:	Purified recombinant human SAFB-1 protein fragments expressed in E.coli.
Antibody Type:	Monoclonal antibody
Isotype:	IgG1
Purified method:	Affinity purified
Subcellular location:	Nucleus
Reactivity:	H
Applications:	WB
Molecular Weight:	130kDa
UniProt number:	Q15424
GeneBank ID:	NM_002967.2
Gene symbol:	HAP; HET; SAFB1; SAF-B1
Alternate names:	HSP27 estrogen response element-TATA box-binding protein

For Research Use Only



Immunocytochemistry stain of Hela using SAFB-1 antibody (1:300).



Western blot detection of SAFB-1 in HeLaNE, A431, MDA-MB-468, Breast cancer, ZR75-1&MCF7 cell lysates using SAFB-1 antibody (1:4000 diluted). Predicted band size: 130kDa Observed band size: 130kDa.