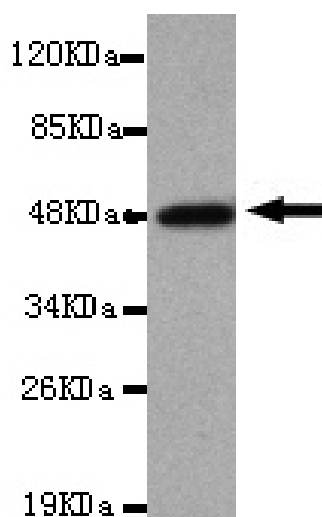




## KDM3A Antibody

**E220066**

<b>Catalog Number</b>	E220066-1, E220066-2
<b>Amount</b>	50µg/50µl, 100µg/100µl
<b>Description</b>	Mouse monoclonal IgG to KDM3A
<b>GeneBank ID</b>	NM_018433.3
<b>Immunogen</b>	Recombinant fragment of Human KDM3A (N-terminus).
<b>Reacts with</b>	Human
<b>Tested applications</b>	Recommended dilutions. ELISA: 1/5000 - 1/20000. WB: 1/100-1/2000.
<b>Relevance</b>	This gene encodes a zinc finger protein that contains a jumonji domain and may play a role in hormone-dependent transcriptional activation. Alternative splicing results in multiple transcript variants.
<b>Purity</b>	Protein G-Sepharose affinity purified.
<b>Storage buffer</b>	Preservative: 0.02% Sodium Azide and 50% glycerol, 1% BSA, PBS, pH7.4.
<b>Form</b>	Liquid
<b>Storage instructions</b>	Aliquot and store at -20°C. Avoid repeated freeze / thaw cycles.



KDM3A antibody (E220066) at 1/2000 dilution interacts with recombinant KDM3A protein with a His tag. Predicted band size: 48KDa. Observed band size: 48KDa.

**For Research Use Only**