

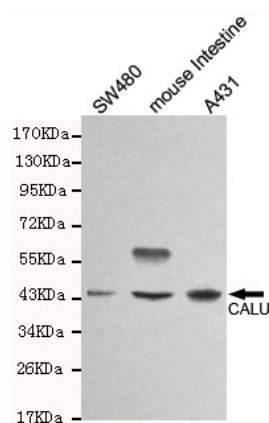


CALU-C Antibody

E2200670

Catalog Number:	E2200670
Size:	100ug
Host:	Mouse
Formulation:	Purified mouse monoclonal in buffer containing 0.1M Tris-Glycine (pH 7.4, 150 mM NaCl) with 0.2% sodium azide, 50% glycerol
Sensitivity:	This antibody detects endogenous levels CALU(C-terminus) and does not cross-react with related proteins.
Entrez summary:	The product of this gene is a calcium-binding protein localized in the endoplasmic reticulum (ER) and it is involved in such ER functions as protein folding and sorting. This protein belongs to a family of multiple EF-hand proteins (CERC) that include reticulocalbin, ERC-55, and Cab45 and the product of this gene. Alternatively spliced transcript variants encoding different isoforms have been identified.
UniPort summary	Involved in regulation of vitamin K-dependent carboxylation of multiple N-terminal glutamate residues. Seems to inhibit gamma-carboxylase GGCX. Binds 7 calcium ions with a low affinity
Function:	
Immunogen:	Purified recombinant human CALU(C-terminus) protein fragments expressed in E.coli.
Antibody Type:	Monoclonal antibody
Isotype:	IgG1
Purified method:	Affinity purified
Subcellular location:	Endoplasmic reticulum lumen. Secreted. Melanosome. Sarcoplasmic reticulum lumen
Reactivity:	H,M
Applications:	WB
Molecular Weight:	37kDa
UniProt number:	O43852
GeneBank ID:	NM_001219
Gene symbol:	null
Alternate names:	Crocalbin, IEF SSP 9302

For Research Use Only



Western blot detection of CALU in SW480, mouse intestine & A431 cell lysates and using CALU antibody (1:1000 diluted). Predicted band size: 37KDa Observed band size:45KDa.