

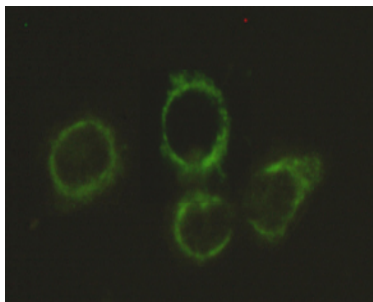


## DLAT Antibody

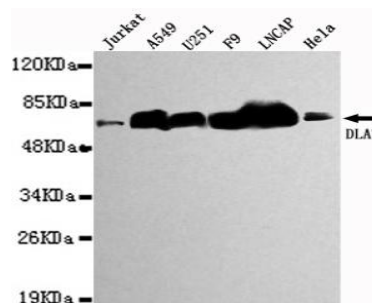
E2200678

<b>Catalog Number:</b>	E2200678
<b>Size:</b>	100ug
<b>Host:</b>	Mouse
<b>Formulation:</b>	Purified mouse monoclonal in buffer containing 0.1M Tris-Glycine (pH 7.4, 150 mM NaCl) with 0.2% sodium azide, 50% glycerol
<b>Sensitivity:</b>	This antibody detects endogenous levels of DLAT and does not cross-react with related proteins.
<b>Entrez summary:</b>	This gene encodes component E2 of the multi-enzyme pyruvate dehydrogenase complex (PDC). PDC resides in the inner mitochondrial membrane and catalyzes the conversion of pyruvate to acetyl coenzyme A. The protein product of this gene, dihydrolipoamide acetyltransferase, accepts acetyl groups formed by the oxidative decarboxylation of pyruvate and transfers them to coenzyme A. Dihydrolipoamide acetyltransferase is the antigen for antimitochondrial antibodies. These autoantibodies are present in nearly 95% of patients with the autoimmune liver disease primary biliary cirrhosis (PBC). In PBC, activated T lymphocytes attack and destroy epithelial cells in the bile duct where this protein is abnormally distributed and overexpressed. PBC eventually leads to cirrhosis and liver failure. Mutations in this gene are also a cause of pyruvate dehydrogenase E2 deficiency which causes primary lactic acidosis in infancy and early childhood
<b>UniPort summary</b>	he pyruvate dehydrogenase complex catalyzes the overall conversion of pyruvate to
<b>Function:</b>	acetyl-CoA and CO <sub>2</sub> . It contains multiple copies of three enzymatic components: pyruvate dehydrogenase (E1), dihydrolipoamide acetyltransferase (E2) and lipoamide dehydrogenase (E3).
<b>Immunogen:</b>	Purified recombinant human DLAT protein fragments expressed in E.coli.
<b>Antibody Type:</b>	Monoclonal antibody
<b>Isotype:</b>	IgG1
<b>Purified method:</b>	Affinity purified
<b>Subcellular location:</b>	Mitochondrion matrix.
<b>Reactivity:</b>	H,M
<b>Applications:</b>	WB,ICC,IP
<b>Molecular Weight:</b>	69kDa
<b>UniProt number:</b>	P10515
<b>GeneBank ID:</b>	NM_001931.4
<b>Gene symbol:</b>	DLTA; PDCE2; PDC-E2
<b>Alternate names:</b>	dihydrolipoamide S-acetyltransferase,PDC-E2,PDCE2,Pyruvate dehydrogenase complex component E2,DLTA,PBC,M2 antigen complex 70 kDa subunit

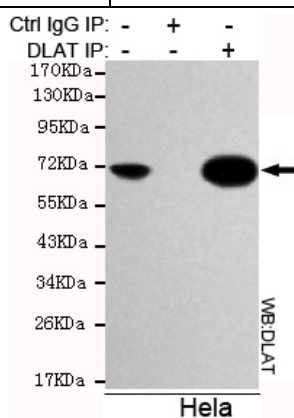
**For Research Use Only**



Immunocytochemistry stain of HeLa using DLAT antibody (1:300).



Western blot detection of DLAT in Jurkat, A549, U251, F9, LNCAP & HeLa cell lysates using DLAT antibody (1:1000 diluted). Predicted band size: 69 kDa. Observed band size: 69 kDa.



Immunoprecipitation analysis of HeLa cell lysates using DLAT antibody.