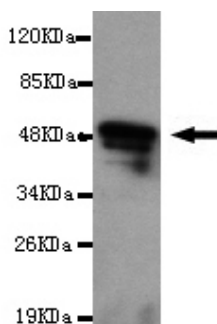




MAP2 Antibody

E220071

Catalog Number	E220071-1, E220071-2
Amount	50µg/50µl, 100µg/100µl
Description	Mouse monoclonal IgG to MAP2
GeneBank ID	NM_031846.1
Immunogen	Recombinant fragment of Human MAP2 (C-terminus).
Reacts with	Hu
Tested applications	Recommended dilutions. ELISA: 1/5000 - 1/20000. WB: 1/100-1/2000.
Cellular localization	Cytoplasm
Relevance	Microtubule-associated protein 2 (MAP2) is a neuronal phosphoprotein that regulates the structure and stability of microtubules, neuronal morphogenesis, cytoskeleton dynamics and organelle trafficking in axons and dendrites. Phosphorylation of MAP2 modulates its association with the cytoskeleton and is developmentally regulated. Serine 136, threonine 1620 and threonine 1623 of MAP2 are phosphorylated by GSK3 and p44/42 MAP kinases. Phosphorylation at threonine 1620/1623 by GSK3 inhibits MAP2 association with microtubules and microtubule stability.
Purity	Protein G-Sepharose affinity purified.
Storage buffer	Preservative: 0.02% Sodium Azide and 50% glycerol, 1% BSA, PBS, pH7.4.
Form	Liquid
Storage instructions	Aliquot and store at -20°C. Avoid repeated freeze / thaw cycles.



MAP2 antibody (E220071) at 1/2000 dilution interacts with recombinant MAP2 protein with a DsbA tag. Predicted band size: 50KDa. Observed band size: 50KDa.

For Research Use Only