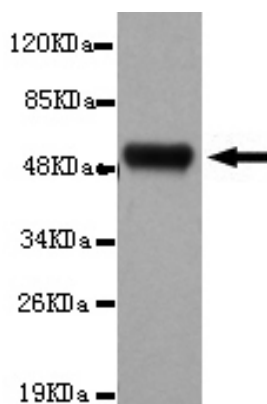




L1CAM Antibody

E220079

Catalog Number	E220079-1, E220079-2
Amount	50µg/50µl, 100µg/100µl
Description	Mouse monoclonal IgG to L1CAM
GeneBank ID	NM_000425.2
Immunogen	Recombinant fragment of Human L1CAM (N-terminus).
Reacts with	Hu
Tested applications	Recommended dilutions. ELISA: 1/5000 - 1/20000. WB: 1/100-1/2000.
Cellular localization	Plasma membrane
Relevance	The L1CAM gene, which is located in Xq28, is involved in three distinct conditions: 1) HSAS (hydrocephalus-stenosis of the aqueduct of Sylvius); 2) MASA (mental retardation, aphasia, shuffling gait, adductus thumbs); and 3) SPG1 (spastic paraplegia). The L1, neural cell adhesion molecule (L1CAM) also plays an important role in axon growth, fasciculation, neural migration and in mediating neuronal differentiation.
Purity	Protein G-Sepharose affinity purified.
Storage buffer	Preservative: 0.02% Sodium Azide and 50% glycerol, 1% BSA, PBS, pH7.4.
Form	Liquid
Storage instructions	Aliquot and store at -20°C. Avoid repeated freeze / thaw cycles.



L1CAM antibody (E220079) at 1/2000 dilution interacts with recombinant L1CAM protein with a DsbA tag. Predicted band size: 53KDa. Observed band size: 53KDa.

For Research Use Only