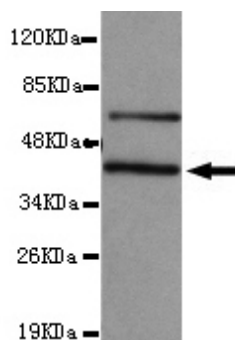




CDH1 Antibody

E220083

Catalog Number	E220083-1, E220083-2
Amount	50µg/50µl, 100µg/100µl
Description	Mouse monoclonal IgG to CDH1
GeneBank ID	AB025106.1
Immunogen	Recombinant fragment of Human CDH1 (N-terminus).
Reacts with	Hu
Tested applications	Recommended dilutions. ELISA: 1/5000 - 1/20000. WB: 1/100-1/2000.
Cellular localization	Plasma membrane
Relevance	This gene is a classical cadherin from the cadherin superfamily. The encoded protein is a calcium dependent cell-cell adhesion glycoprotein comprised of five extracellular cadherin repeats, a transmembrane region and a highly conserved cytoplasmic tail. Mutations in this gene are correlated with gastric, breast, colorectal, thyroid and ovarian cancer. Loss of function is thought to contribute to progression in cancer by increasing proliferation, invasion, and/or metastasis. The ectodomain of this protein mediates bacterial adhesion to mammalian cells and the cytoplasmic domain is required for internalization.
Purity	Protein G-Sepharose affinity purified.
Storage buffer	Preservative: 0.02% Sodium Azide and 50% glycerol, 1%BSA, PBS, pH7.4.
Form	Liquid
Storage instructions	Aliquot and store at -20°C. Avoid repeated freeze / thaw cycles.



CDH1 antibody (E220083) at 1/2000 dilution interacts with recombinant CDH1 protein with a DsbA tag. Predicted band size: 42KDa. Observed band size: 42KDa.

For Research Use Only