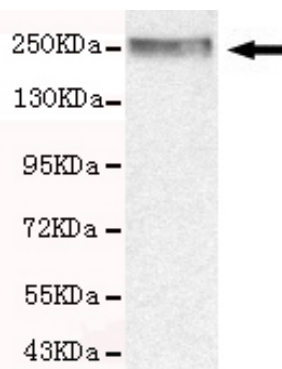




CHD3 Antibody

E220085

Catalog Number	E220085-1, E220085-2
Amount	50µg/50µl, 100µg/100µl
Description	Mouse monoclonal IgG to CHD3
GeneBank ID	NM_001005271
Immunogen	Recombinant fragment of Human CHD3 (C-terminus).
Reacts with	Hu
Tested applications	Recommended dilutions. ELISA: 1/5000 - 1/20000. WB: 1/100-1/2000.
Cellular localization	Nucleus
Relevance	This gene encodes a member of the CHD family of proteins which are characterized by the presence of chromo (chromatin organization modifier) domains and SNF2-related helicase/ATPase domains. This protein is one of the components of a histone deacetylase complex referred to as the Mi-2/NuRD complex which participates in the remodeling of chromatin by deacetylating histones. Chromatin remodeling is essential for many processes including transcription.
Purity	Protein G-Sepharose affinity purified.
Storage buffer	Preservative: 0.02% Sodium Azide and 50% glycerol, 1% BSA, PBS, pH7.4.
Form	Liquid
Storage instructions	Aliquot and store at -20°C. Avoid repeated freeze / thaw cycles.



CHD3 antibody (E220085) at 1/1000 dilution. Raji whole cell lysate 40ug/Lane. Predicted band size: 226KDa. Observed band size: 260KDa.

For Research Use Only