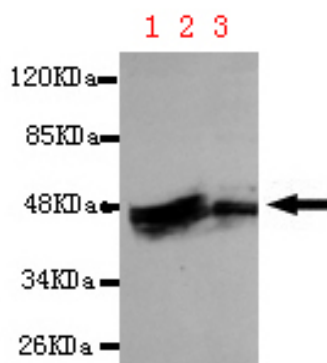




## KRT7 Antibody

**E220088**

<b>Catalog Number</b>	E220088-1, E220088-2
<b>Amount</b>	50µg/50µl, 100µg/100µl
<b>Description</b>	Mouse monoclonal IgG to KRT7
<b>GeneBank ID</b>	NM_005556.3
<b>Immunogen</b>	Recombinant fragment of Human KRT7 (N-terminus).
<b>Reacts with</b>	Hu
<b>Tested applications</b>	Recommended dilutions. ELISA: 1/5000 - 1/20000. WB: 1/100-1/2000.
<b>Cellular localization</b>	Cytoplasm.
<b>Relevance</b>	The protein encoded by this gene is a member of the keratin gene family. The type II cytokeratins consist of basic or neutral proteins which are arranged in pairs of heterotypic keratin chains coexpressed during differentiation of simple and stratified epithelial tissues. This type II cytokeratin is specifically expressed in the simple epithelia lining the cavities of the internal organs and in the gland ducts and blood vessels.
<b>Purity</b>	Protein G-Sepharose affinity purified.
<b>Storage buffer</b>	Preservative: 0.02% Sodium Azide and 50% glycerol, 1% BSA, PBS, pH7.4.
<b>Form</b>	Liquid
<b>Storage instructions</b>	Aliquot and store at -20°C. Avoid repeated freeze / thaw cycles.



KRT7 antibody (E220088) at 1/100 dilution. Lane1: A459 whole cell lysate 40ug/Lane. Lane2: A431 whole cell lysate 40ug/Lane. Lane3: Hela whole cell lysate 40ug/Lane. Predicted band size: 50KDa. Observed band size: 50KDa.

**For Research Use Only**