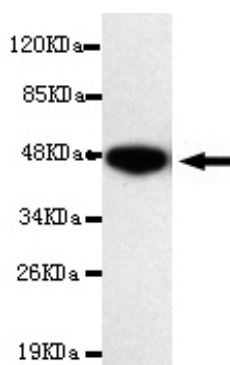




## CBX3 Antibody

**E220093**

<b>Catalog Number</b>	E220093-1, E220093-2
<b>Amount</b>	50µg/50µl, 100µg/100µl
<b>Description</b>	Mouse monoclonal IgG to CBX3
<b>GeneBank ID</b>	NM_007276
<b>Immunogen</b>	Recombinant full length protein of human CBX3.
<b>Reacts with</b>	Human
<b>Tested applications</b>	ELISA, WB
<b>Application notes</b>	Recommended dilutions. ELISA: 1/5000 - 1/20000. WB: 1/100-1/2000.
<b>Cellular localization</b>	Nucleus
<b>Relevance</b>	At the nuclear envelope, the nuclear lamina and heterochromatin are adjacent to the inner nuclear membrane. The protein encoded by this gene binds DNA and is a component of heterochromatin. This protein also can bind lamin B receptor, an integral membrane protein found in the inner nuclear membrane. The dual binding functions of the encoded protein may explain the association of heterochromatin with the inner nuclear membrane.
<b>Purity</b>	Protein G-Sepharose affinity purified.
<b>Storage buffer</b>	Preservative: 0.02% Sodium Azide and 50% glycerol, 1% BSA, PBS, pH7.4.
<b>Form</b>	Liquid
<b>Storage instructions</b>	Aliquot and store at -20°C. Avoid repeated freeze / thaw cycles.



CBX3 antibody (E220093) at 1/2000 dilution interacts with recombinant CBX3 protein with a GST tag.  
Predicted band size: 48KDa. Observed band size: 48KDa.

**For Research Use Only**