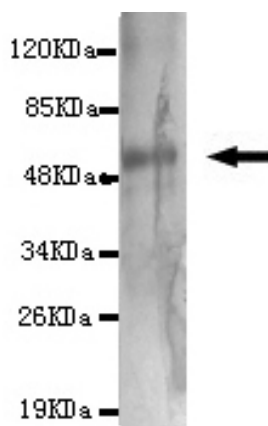




KAT2B Antibody

E220096

Catalog Number	E220096-1, E220096-2
Amount	50µg/50µl, 100µg/100µl
Description	Mouse monoclonal IgG to KAT2B
GeneBank ID	NM_003884
Immunogen	Recombinant fragment of human KAT2B (C-terminus).
Reacts with	Human
Tested applications	Recommended dilutions. ELISA: 1/5000 - 1/20000. WB: 1/100-1/2000.
Cellular localization	Nucleus
Relevance	CBP and p300 are large nuclear proteins that bind to many sequence-specific factors involved in cell growth and/or differentiation, including c-jun and the adenoviral oncoprotein E1A. The protein encoded by this gene associates with p300/CBP. It has in vitro and in vivo binding activity with CBP and p300, and competes with E1A for binding sites in p300/CBP.
Purity	Protein G-Sepharose affinity purified.
Storage buffer	Preservative: 0.02% Sodium Azide and 50% glycerol. 1% BSA, PBS, pH7.4.
Form	Liquid
Storage instructions	Aliquot and store at -20°C. Avoid repeated freeze / thaw cycles.



KAT2B antibody (E220096) at 1/2000 dilution interacts with recombinant KAT2B protein with a GST tag.
Predicted band size: 55KDa. Observed band size: 55KDa.

For Research Use Only