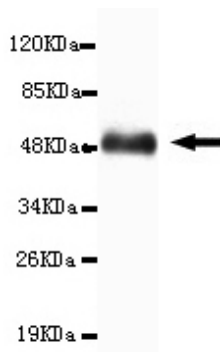




PRKCA Antibody

E220102

| | |
|------------------------------|---|
| Catalog Number | E220102-1, E220102-2 |
| Amount | 50µg/50µl, 100µg/100µl |
| Description | Mouse monoclonal IgG to PRKCA |
| GeneBank ID | NM_002737.2 |
| Immunogen | Recombinant fragment of human PRKCA (C-terminus). |
| Reacts with | Human |
| Tested applications | Recommended dilutions. ELISA: 1/5000 - 1/20000. WB: 1/100-1/2000. |
| Cellular localization | Cytoplasm |
| Relevance | PKC family members phosphorylate a wide variety of protein targets and are known to be involved in diverse cellular signaling pathways. The protein encoded by this gene is one of the PKC family members. This kinase has been reported to play roles in many different cellular processes, such as cell adhesion, cell transformation, cell cycle checkpoint, and cell volume control. Knockout studies in mice suggest that this kinase may be a fundamental regulator of cardiac contractility and Ca(2+) handling in myocytes. |
| Purity | Protein G-Sepharose affinity purified. |
| Storage buffer | Preservative: 0.02% Sodium Azide and 50% glycerol, 1% BSA, PBS, pH7.4. |
| Form | Liquid |
| Storage instructions | Aliquot and store at -20°C. Avoid repeated freeze / thaw cycles. |



PRKCA (C-terminus) antibody (E220102) at 1/2000 dilution interacts with recombinant PRKCA protein with a DsbA tag. Predicted band size: 50KDa. Observed band size: 50KDa.

For Research Use Only