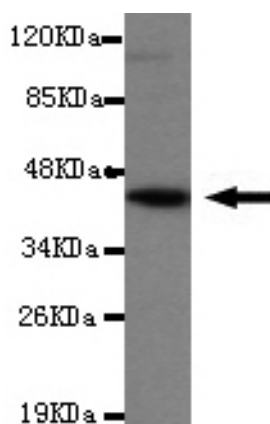




## CD4 Antibody

**E220103**

<b>Catalog Number</b>	E220103-1, E220103-2
<b>Amount</b>	50µg/50µl, 100µg/100µl
<b>Description</b>	Mouse monoclonal IgG to CD4
<b>GeneBank ID</b>	NM_000616.3
<b>Immunogen</b>	Recombinant fragment of human CD4 (C-terminus).
<b>Reacts with</b>	Human
<b>Tested applications</b>	Recommended dilutions. ELISA: 1/5000 - 1/20000. WB: 1/100-1/2000.
<b>Cellular localization</b>	Plasma membrane
<b>Relevance</b>	CD4 is a single chain transmembraneous glycoprotein (59 kDa) which belongs to the immunoglobulin superfamily. CD4 is present on a subset of T lymphocytes ("helper/inducer" T cells) and is also expressed at a lower level on monocytes, tissue macrophages and granulocytes. The antigen is involved in binding to MHC class II molecules. The intracellular domain of the antigen is associated with p56lck protein tyrosine kinase.
<b>Purity</b>	Protein G-Sepharose affinity purified.
<b>Storage buffer</b>	Preservative: 0.02% Sodium Azide and 50% glycerol, 1% BSA, PBS, pH7.4.
<b>Form</b>	Liquid
<b>Storage instructions</b>	Aliquot and store at -20°C. Avoid repeated freeze / thaw cycles.



CD4 antibody (E220103) at 1/2000 dilution interacts with recombinant CD4 protein with a DsbA tag.  
Predicted band size: 45KDa. Observed band size: 45KDa.

**For Research Use Only**