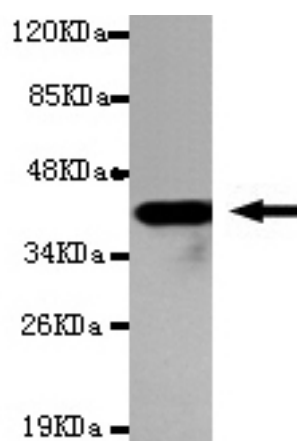




## TKTL1 Antibody

**E220105**

|                              |  |
|------------------------------|--|
| <b>Catalog Number</b>        | E220105-1, E220105-2   |
| <b>Amount</b>                | 50µg/50µl, 100µg/100µl   |
| <b>Description</b>           | Mouse monoclonal IgG to TKTL1  |
| <b>GeneBank ID</b>           | NM_012253.2  |
| <b>Immunogen</b>             | Recombinant fragment of human TKTL1 (C-terminus).  |
| <b>Reacts with</b>           | Human  |
| <b>Tested applications</b>   | Recommended dilutions. ELISA: 1/5000 - 1/20000. WB: 1/100-1/2000.  |
| <b>Cellular localization</b> | Cytoplasm  |
| <b>Relevance</b>             | Transketolase is a thiamine-dependent enzyme that links the pentose phosphate pathway with the glycolytic pathway. TKTL1 is a transketolase-related protein. TKTL1 is upregulated in many cancers. |
| <b>Purity</b>                | Protein G-Sepharose affinity purified.   |
| <b>Storage buffer</b>        | Preservative: 0.02% Sodium Azide and 50% glycerol, 1%BSA, PBS, pH7.4.  |
| <b>Form</b>                  | Liquid   |
| <b>Storage instructions</b>  | Aliquot and store at -20°C. Avoid repeated freeze / thaw cycles.   |



TKTL1(C-terminus) antibody (E220105) at 1/2000 dilution interacts with recombinant TKTL1 protein with a DsbA tag. Predicted band size: 41KDa. Observed band size: 41KDa.

**For Research Use Only**