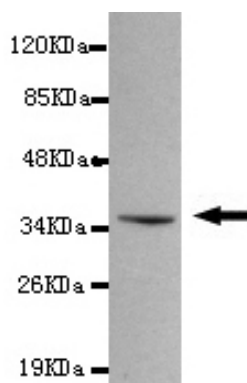




EphA2 Antibody

E220106

Catalog Number	E220106-1, E220106-2
Amount	50µg/50µl, 100µg/100µl
Description	Mouse monoclonal IgG to EphA2
GeneBank ID	NM_004431.2
Immunogen	Recombinant fragment of human EphA2 (C-terminus).
Reacts with	Human
Tested applications	Recommended dilution. ELISA: 1/5000 - 1/20000. WB: 1/100-1/2000.
Cellular localization	Plasma membrane
Relevance	This gene belongs to the ephrin receptor subfamily of the protein-tyrosine kinase family. EPH and EPH-related receptors have been implicated in mediating developmental events, particularly in the nervous system. The ephrin receptors are divided into 2 groups based on the similarity of their extracellular domain sequences and their affinities for binding ephrin-A and ephrin-B ligands. This gene encodes a protein that binds ephrin-A ligands.
Purity	Protein G-Sepharose affinity purified.
Storage buffer	Preservative: 0.02% Sodium Azide and 50% glycerol. 1% BSA, PBS, pH7.4.
Form	Liquid
Storage instructions	Aliquot and store at -20°C. Avoid repeated freeze / thaw cycles.



EphA2 (C-terminus) antibody (E220106) at 1/2000 dilution interacts with recombinant EphA2 protein with a DsbA tag. Predicted band size: 36KDa, Observed band size: 36KDa.

For Research Use Only