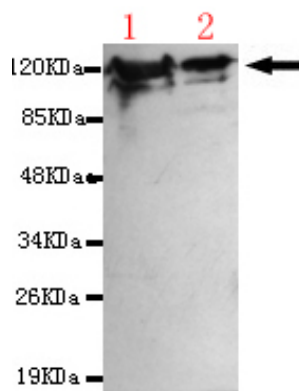




ITGA6 Antibody

E220108

Catalog Number	E220108-1, E220108-2
Amount	50µg/50µl, 100µg/100µl
Description	Mouse monoclonal IgG to ITGA6
GeneBank ID	X53586
Immunogen	Recombinant fragment of human ITGA6 (N-terminus).
Reacts with	Human
Tested applications	Recommended dilutions. ELISA: 1/5000 - 1/20000. WB: 1/100-1/2000.
Cellular localization	Plasma membrane
Relevance	The ITGA6 protein product is the integrin alpha chain alpha 6. Integrins are integral cell-surface proteins composed of an alpha chain and a beta chain. A given chain may combine with multiple partners resulting in different integrins. For example, alpha 6 may combine with beta 4 in the integrin referred to as TSP180, or with beta 1 in the integrin VLA-6. Integrins are known to participate in cell adhesion as well as cell-surface mediated signalling.
Purity	Protein G-Sepharose affinity purified.
Storage buffer	Preservative: 0.02% Sodium Azide and 50% glycerol. 1% BSA, PBS, pH7.4.
Form	Liquid
Storage instructions	Aliquot and store at -20°C. Avoid repeated freeze / thaw cycles.



ITGA6 (N-terminus) antibody (E220108) at 1/1000 dilution. Lane1: HepG2 whole cell lysate 40ug/lane. Lane2: 293 whole cell lysate 40ug/lane. Predicted band size: 119KDa. Observed band size: 119KDa.

For Research Use Only