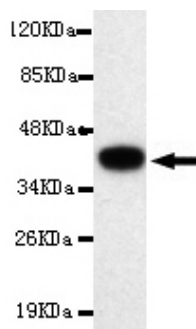




SMAD5 Antibody

E220109

Catalog Number	E220109-1, E220109-2
Amount	50µg/50µl, 100µg/100µl
Description	Mouse monoclonal IgG to SMAD5
GeneBank ID	NM_001001420.1
Immunogen	Recombinant fragment of human SMAD5 (C-terminus).
Reacts with	Human
Tested applications	Recommended dilutions. ELISA: 1/5000 - 1/20000. WB: 1/100-1/2000.
Cellular localization	Nucleus
Relevance	SMAD5 is a member of the Mothers Against Dpp (MAD)-related family of proteins. It is a receptor-regulated SMAD (R-SMAD), and acts as an intracellular signal transducer for the transforming growth factor beta superfamily. SMAD5 is activated through serine phosphorylation by BMP (bone morphogenetic proteins) type 1 receptor kinase. It is cytoplasmic in the absence of its ligand and migrates into the nucleus upon phosphorylation and complex formation with SMAD4. Here the SMAD5/SMAD4 complex stimulates the transcription of target genes.
Purity	Protein G-Sepharose affinity purified.
Storage buffer	Preservative: 0.02% Sodium Azide and 50% glycerol. 1% BSA, PBS, pH7.4.
Form	Liquid
Storage instructions	Aliquot and store at -20°C. Avoid repeated freeze / thaw cycles.



SMAD5 (C-terminus) antibody (E220109) at 1/2000 dilution interacts with recombinant SMAD5 protein with a DsbA tag. Predicted band size: 40KDa. Observed band size: 40KDa.

For Research Use Only