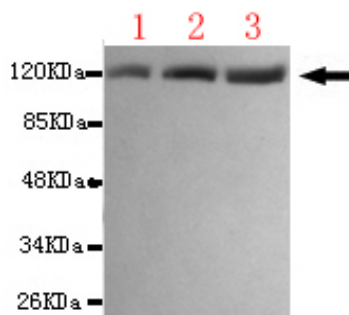




ACLY Antibody

E220110

Catalog Number	E220110-1, E220110-2
Amount	50µg/50µl, 100µg/100µl
Description	Mouse monoclonal IgG to ACLY
GeneBank ID	NM_001096.2
Immunogen	Recombinant fragment of human ACLY (C-terminus).
Reacts with	Human
Tested applications	Recommended dilutions. ELISA: 1/5000 - 1/20000. WB: 1/100-1/2000.
Cellular localization	Cytoplasm
Relevance	ATP citrate lyase is the primary enzyme responsible for the synthesis of cytosolic acetyl-CoA in many tissues. The enzyme is a tetramer (relative molecular weight approximately 440,000) of apparently identical subunits. It catalyzes the formation of acetyl-CoA and oxaloacetate from citrate and CoA with a concomitant hydrolysis of ATP to ADP and phosphate. The product, acetyl-CoA, serves several important biosynthetic pathways, including lipogenesis and cholesterologenesis.
Purity	Protein G-Sepharose affinity purified.
Storage buffer	Preservative: 0.02% Sodium Azide and 50% glycerol. 1% BSA, PBS, pH7.4.
Form	Liquid
Storage instructions	Aliquot and store at -20°C. Avoid repeated freeze / thaw cycles.



ACLY (C-terminus) antibody (E220110) at 1/1000 dilution. Lane1: K562 whole cell lysate 40ug/lane. Lane2: Jurkat whole cell lysate 40ug/lane. Lane3: Hela whole cell lysate 40ug/lane. Predicted band size: 120KDa. Observed band size: 120KDa.

For Research Use Only