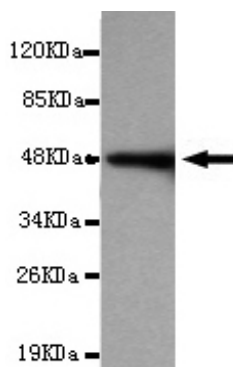




## CDH2 Antibody

**E220111**

<b>Catalog Number</b>	E220111-1, E220111-2
<b>Amount</b>	50µg/50µl, 100µg/100µl
<b>Description</b>	Mouse monoclonal IgG to CDH2
<b>GeneBank ID</b>	NM_001792.3
<b>Immunogen</b>	Recombinant fragment of human CDH2(C-terminus).
<b>Reacts with</b>	Human
<b>Tested applications</b>	Recommended dilutions. ELISA: 1/5000 - 1/20000. WB: 1/100-1/2000.
<b>Cellular localization</b>	Plasma membrane
<b>Relevance</b>	This gene is a classical cadherin from the cadherin superfamily. The encoded protein is a calcium dependent cell-cell adhesion glycoprotein comprised of five extracellular cadherin repeats, a transmembrane region and a highly conserved cytoplasmic tail. The protein functions during gastrulation and is required for establishment of left-right asymmetry. At certain central nervous system synapses, presynaptic to postsynaptic adhesion is mediated at least in part by this gene product.
<b>Purity</b>	Protein G-Sepharose affinity purified.
<b>Storage buffer</b>	Preservative: 0.02% Sodium Azide and 50% glycerol. 1% BSA, PBS, pH7.4.
<b>Form</b>	Liquid
<b>Storage instructions</b>	Aliquot and store at -20°C. Avoid repeated freeze / thaw cycles.



CDH2(C-terminus) antibody (E220111) at 1/2000 dilution interacts with recombinant CDH2 protein with a DsbA tag. Predicted band size: 49KDa. Observed band size: 49KDa.

**For Research Use Only**