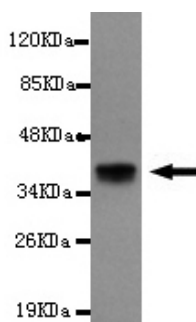




ACTN2 Antibody

E220112

Catalog Number	E220112-1, E220112-2
Amount	50µg/50µl, 100µg/100µl
Description	Mouse monoclonal IgG to ACTN2
GeneBank ID	NM_001103.2
Immunogen	Recombinant fragment of human ACTN2 (C-terminus).
Reacts with	Human
Tested applications	Recommended dilutions. ELISA: 1/5000 - 1/20000. WB: 1/100-1/2000.
Cellular localization	Cytoplasm
Relevance	Alpha actinins belong to the spectrin gene superfamily which represents a diverse group of cytoskeletal proteins, including the alpha and beta spectrins and dystrophins. Alpha actinin is an actin-binding protein with multiple roles in different cell types. In nonmuscle cells, the cytoskeletal isoform is found along microfilament bundles and adherens-type junctions, where it is involved in binding actin to the membrane. This gene encodes a nonmuscle, cytoskeletal, alpha actinin isoform and maps to the same site as the structurally similar erythroid beta spectrin gene.
Purity	Protein G-Sepharose affinity purified.
Storage buffer	Preservative: 0.02% Sodium Azide and 50% glycerol. 1% BSA, PBS, pH7.4.
Form	Liquid
Storage instructions	Aliquot and store at -20°C. Avoid repeated freeze / thaw cycles.



ACTN2 (C-terminus) antibody (E220112) at 1/2000 dilution interacts with recombinant ACTN2 protein with a DsbA tag. Predicted band size: 37KDa. Observed band size: 37KDa.

For Research Use Only