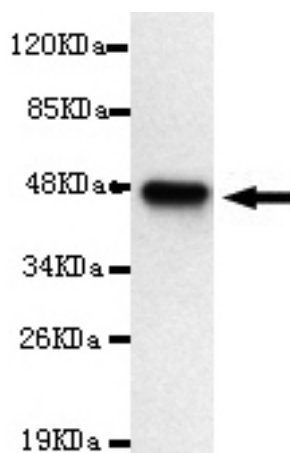




SERPINA1 Antibody

E220114

Catalog Number	E220114-1, E220114-2
Amount	50µg/50µl, 100µg/100µl
Description	Mouse monoclonal IgG to SERPINA1
GeneBank ID	AF130068
Immunogen	Recombinant fragment of human SERPINA1 (C-terminus).
Reacts with	Human
Tested applications	Recommended dilutions. ELISA: 1/5000 - 1/20000. WB: 1/100-1/2000.
Cellular localization	Extracellular
Relevance	The protein encoded by this gene is secreted and is a serine protease inhibitor whose targets include elastase, plasmin, thrombin, trypsin, chymotrypsin, and plasminogen activator. Defects in this gene can cause emphysema or liver disease. Several transcript variants encoding the same protein have been found for this gene.
Purity	Protein G-Sepharose affinity purified.
Storage buffer	Preservative: 0.02% Sodium Azide and 50% glycerol. 1% BSA, PBS, pH7.4.
Form	Liquid
Storage instructions	Aliquot and store at -20°C. Avoid repeated freeze / thaw cycles.



SERPINA1 (C-terminus) antibody (E220114) at 1/2000 dilution interacts with recombinant SERPINA1 protein with a DsbA tag. Predicted band size: 48KDa. Observed band size: 48KDa.

For Research Use Only