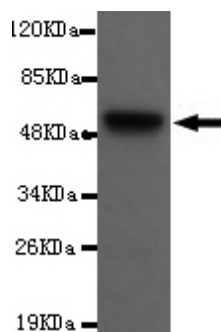




## MBD4 Antibody

**E220118**

<b>Catalog Number</b>	E220118-1, E220118-2
<b>Amount</b>	50µg/50µl, 100µg/100µl
<b>Description</b>	Mouse monoclonal IgG to MBD4
<b>GeneBank ID</b>	NM_003925
<b>Immunogen</b>	Recombinant fragment of human MBD4 (N-terminus).
<b>Reacts with</b>	Human
<b>Tested applications</b>	Recommended dilutions. ELISA: 1/5000 - 1/20000. WB: 1/100-1/2000.
<b>Cellular localization</b>	Nucleus
<b>Relevance</b>	DNA methylation is the major modification of eukaryotic genomes and plays an essential role in mammalian development. Human proteins MECP2, MBD1, MBD2, MBD3, and MBD4 comprise a family of nuclear proteins related by the presence in each of a methyl-CpG binding domain (MBD). MBD4 may function to mediate the biological consequences of the methylation signal. In addition, MBD4 has protein sequence similarity to bacterial DNA repair enzymes and thus may have some function in DNA repair.
<b>Purity</b>	Protein G-Sepharose affinity purified.
<b>Storage buffer</b>	Preservative: 0.02% Sodium Azide and 50% glycerol, 1% BSA, PBS, pH7.4.
<b>Form</b>	Liquid
<b>Storage instructions</b>	Aliquot and store at -20°C. Avoid repeated freeze / thaw cycles.



MBD4 antibody (E220118) at 1/2000 dilution interacts with recombinant MBD4 protein with a GST tag.  
Predicted band size: 55KDa. Observed band size: 55KDa.

**For Research Use Only**