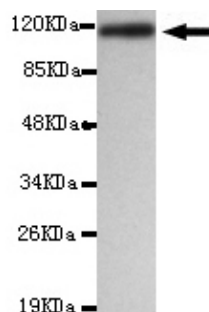




## EFNA1 Antibody

**E220126**

<b>Catalog Number</b>	E220126-1, E220126-2
<b>Amount</b>	50µg/50µl, 100µg/100µl
<b>Description</b>	Mouse monoclonal IgG to EFNA1
<b>GeneBank ID</b>	NM_004428.2
<b>Swizz-prot ID</b>	P20827
<b>Immunogen</b>	Recombinant full length protein of human EFNA1.
<b>Reacts with</b>	Human
<b>Application notes</b>	Recommended dilutions. ELISA: 1/5000-1/20000. WB: 1/100-1/2000.
<b>Cellular localization</b>	Plasma membrane
<b>Relevance</b>	This gene encodes a member of the ephrin (EPH) family. Based on their structures and sequence relationships, ephrins are divided into the ephrin-A (EFNA) class, which are anchored to the membrane by a glycosylphosphatidylinositol linkage. This gene encodes an EFNA class ephrin which binds to the EPHA2, EPHA4, EPHA5, EPHA6, and EPHA7 receptors.
<b>Purity</b>	Protein G-Sepharose affinity purified.
<b>Storage buffer</b>	Preservative: 0.02% Sodium Azide and 50% glycerol, 1% BSA, PBS, pH7.4.
<b>Form</b>	Liquid
<b>Storage instructions</b>	Aliquot and store at -20°C. Avoid repeated freeze / thaw cycles.



EFNA1 antibody (E220126) at 1/2000 dilution + recombinant EFNA1 protein. Predicted band size: 20KDa. Observed band size: 120KDa.

**For Research Use Only**