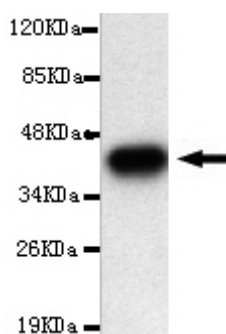




## APG10 Antibody

**E220127**

<b>Catalog Number</b>	E220127-1, E220127-2
<b>Amount</b>	50µg/50µl, 100µg/100µl
<b>Description</b>	Mouse monoclonal IgG to APG10. Clone number:1F3-C9-D7.
<b>GeneBank ID</b>	NM_031482
<b>Swizz-prot ID</b>	Q9HOY0
<b>Immunogen</b>	Recombinant fragment of human APG10 (N-terminus).
<b>Reacts with</b>	Human
<b>Application notes</b>	Recommended dilutions. ELISA: 1/5000-1/20000. WB: 1/100-1/2000.
<b>Cellular localization</b>	Cytoplasm, Nucleus
<b>Relevance</b>	Autophagy is a process for the bulk degradation of cytosolic compartments by lysosomes. ATG10 is an E2-like enzyme involved in 2 ubiquitin-like modifications essential for autophagosome formation: ATG12 (MIM 609608)-ATG5 (MIM 604261) conjugation and modification of a soluble form of MAP-LC3 (MAP1LC3A; MIM 601242), a homolog of yeast Apg8, to a membrane-bound form
<b>Purity</b>	Protein G-Sepharose affinity purified.
<b>Storage buffer</b>	Preservative: 0.02% Sodium Azide and 50% glycerol, 1% BSA, PBS, pH7.4.
<b>Form</b>	Liquid
<b>Storage instructions</b>	Aliquot and store at -20°C. Avoid repeated freeze / thaw cycles.



APG10 (N-terminus) antibody (E220127) at 1/2000 dilution + recombinant APG10 protein with a DsbA tag. Predicted band size: 38KDa. Observed band size: 38KDa.

**For Research Use Only**