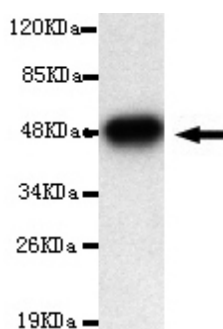




CDH2 Antibody

E220128

Catalog Number	E220128-1, E220128-2
Amount	50µg/50µl, 100µg/100µl
Description	Mouse monoclonal IgG to CDH2
GeneBank ID	NM_001792
Swizz-prot ID	P19022
Immunogen	Recombinant fragment of human CDH2 (N-terminus).
Reacts with	Human
Application notes	Recommended dilutions. ELISA: 1/5000-1/20000. WB: 1/100-1/2000.
Cellular localization	Plasma membrane
Relevance	This gene is a classical cadherin from the cadherin superfamily. The encoded protein is a calcium dependent cell-cell adhesion glycoprotein comprised of five extracellular cadherin repeats, a transmembrane region and a highly conserved cytoplasmic tail. The protein functions during gastrulation and is required for establishment of left-right asymmetry. At certain central nervous system synapses, presynaptic to postsynaptic adhesion is mediated at least in part by this gene product.
Purity	Protein G-Sepharose affinity purified.
Storage buffer	Preservative: 0.02% Sodium Azide and 50% glycerol, 1% BSA, PBS, pH7.4.
Form	Liquid
Storage instructions	Aliquot and store at -20°C. Avoid repeated freeze / thaw cycles.



CDH2 (N-terminus) antibody (E220128) at 1/2000 dilution + recombinant CDH2 protein with a DsbA tag.
Predicted band size: 49KDa. Observed band size: 49KDa.

For Research Use Only