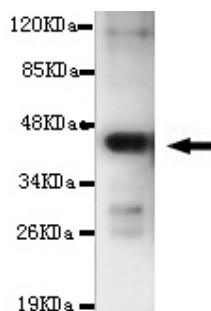




MAPK1 Antibody

E220129

Catalog Number	E220129-1, E220129-2
Amount	50µg/50µl, 100µg/100µl
Description	Mouse monoclonal IgG to MAPK1
GeneBank ID	NM_138957.2
Swizz-prot ID	P28482
Immunogen	Recombinant fragment of human MAPK1 (C-terminus).
Reacts with	Human
Application notes	Recommended dilutions. ELISA: 1/5000-1/20000. WB: 1/100-1/2000.
Cellular localization	Cytoplasm
Relevance	The protein encoded by this gene is a member of the MAP kinase family. MAP kinases, also known as extracellular signal-regulated kinases (ERKs), act as an integration point for multiple biochemical signals, and are involved in a wide variety of cellular processes such as proliferation, differentiation, transcription regulation and development.
Purity	Protein G-Sepharose affinity purified
Storage buffer	Preservative: 0.02% Sodium Azide and 50% glycerol, 1% BSA, PBS, pH7.4.
Form	Liquid
Storage instructions	Aliquot and store at -20°C. Avoid repeated freeze / thaw cycles.



MAPK1 (C-terminus) antibody (E220129) at 1/2000 dilution + recombinant MAPK1 protein with a Dsba tag. Predicted band size: 45kDa. Observed band size: 45kDa.

For Research Use Only