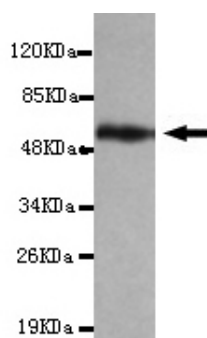




SYCP2 Antibody

E220132

Catalog Number	E220132-1, E220132-2
Amount	50µg/50µl, 100µg/100µl
Description	Mouse monoclonal IgG to SYCP2
GeneBank ID	NM_014258.2
Swizz-prot ID	Q9BX26
Immunogen	Recombinant fragment of human SYCP2 (N-terminus).
Reacts with	Human
Application notes	Recommended dilutions. ELISA: 1/5000-1/20000. WB: 1/100-1/2000.
Cellular localization	Nucleus
Relevance	The synaptonemal complex is a proteinaceous structure that links homologous chromosomes during the prophase of meiosis. The protein encoded by this gene is a major component of the synaptonemal complex and may bind DNA at scaffold attachment regions. The encoded protein requires synaptonemal complex protein 3, but not 1, for inclusion in the synaptonemal complex.
Purity	Protein G-Sepharose affinity purified
Storage buffer	Preservative: 0.02% Sodium Azide and 50% glycerol, 1% BSA, PBS, pH7.4.
Form	Liquid
Storage instructions	Aliquot and store at -20°C. Avoid repeated freeze / thaw cycles.



SYCP2 (N-terminus) antibody (E220132) at 1/2000 dilution + recombinant SYCP2 protein with a GST tag.
Predicted band size: 55KDa. Observed band size: 55KDa.

For Research Use Only