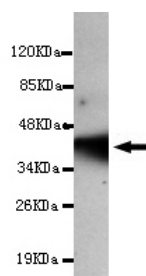




## ITGB3 Antibody

**E220133**

<b>Catalog Number</b>	E220133-1, E220133-2
<b>Amount</b>	50µg/50µl, 100µg/100µl
<b>Description</b>	Mouse monoclonal IgG to ITGB3
<b>GeneBank ID</b>	NM_000212
<b>Swizz-prot ID</b>	P05106
<b>Immunogen</b>	Recombinant fragment of human ITGB3 (N-terminus).
<b>Reacts with</b>	Human
<b>Application notes</b>	Recommended dilutions. ELISA: 1/5000-1/20000. WB: 1/100-1/2000.
<b>Cellular localization</b>	Plasma membrane
<b>Relevance</b>	The ITGB3 protein product is the integrin beta chain beta 3. Integrins are integral cell-surface proteins composed of an alpha chain and a beta chain. A given chain may combine with multiple partners resulting in different integrins. Integrin beta 3 is found along with the alpha IIb chain in platelets. Integrins are known to participate in cell adhesion as well as cell-surface mediated signalling.
<b>Purity</b>	Protein G-Sepharose affinity purified
<b>Storage buffer</b>	Preservative: 0.02% Sodium Azide and 50% glycerol, 1% BSA, PBS, pH7.4.
<b>Form</b>	Liquid
<b>Storage instructions</b>	Aliquot and store at -20°C. Avoid repeated freeze / thaw cycles.



ITGB3 (N-terminus) antibody (E220133) at 1/2000 dilution + recombinant ITGB3 protein with a DsbA tag.  
Predicted band size: 43KDa. Observed band size: 43KDa.

**For Research Use Only**