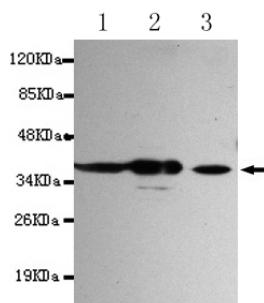




GAPDH Antibody

E220135

Catalog Number	E220135-1, E220135-2
Amount	50µg/50µl, 100µg/100µl
Description	Mouse monoclonal IgG to GAPDH
GeneBank ID	NM_002046.3
Swizz-port ID	P04406
Immunogen	Recombinant fragment of human GAPDH (Internal).
Reacts with	Human
Application notes	Recommended dilutions. ELISA: 1/5000 - 1/20000. WB: 1/100 - 1/2000.
Cellular localization	Cytoplasm
Relevance	The product of this gene catalyzes an important energy-yielding step in carbohydrate metabolism, the reversible oxidative phosphorylation of glyceraldehyde-3-phosphate in the presence of inorganic phosphate and nicotinamide adenine dinucleotide (NAD).
Purity	Protein G-Sepharose affinity purified
Storage buffer	Preservative: 0.02% Sodium Azide and 50% glycerol, 1% BSA, PBS, pH7.4.
Form	Liquid
Storage instructions	Aliquot and store at -20°C. Avoid repeated freeze / thaw cycles.



GAPDH (Internal) antibody (E220135) at 1/1000 dilution. Lane1: MCF7 whole cell lysate: 40ug/lane. Lane2: A549 whole cell lysate: 40ug/lane. Lane3: Hela whole cell lysate: 40ug/lane. Predicted band size: 35KDa. Observed band size: 35KDa.

For Research Use Only