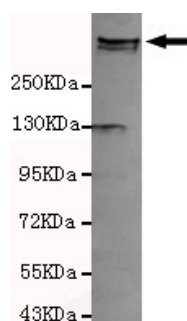




## MAP2 Antibody

**E220136**

<b>Catalog Number</b>	E220136-1, E220136-2
<b>Amount</b>	50µg/50µl, 100µg/100µl
<b>Description</b>	Mouse monoclonal IgG to MAP2
<b>GeneBank ID</b>	NM_031846.1
<b>Swizz-prot ID</b>	P11137
<b>Immunogen</b>	Recombinant fragment of human MAP2 (N-terminus).
<b>Reacts with</b>	Human
<b>Application notes</b>	Recommended dilutions. ELISA: 1/5000 - 1/20000. WB: 1/100 - 1/2000.
<b>Cellular localization</b>	Cytoplasm
<b>Relevance</b>	This gene encodes a protein that belongs to the microtubule-associated protein family. The proteins of this family are thought to be involved in microtubule assembly, which is an essential step in neurogenesis.
<b>Purity</b>	Protein G-Sepharose affinity purified.
<b>Storage buffer</b>	Preservative: 0.02% Sodium Azide and 50% glycerol, 1% BSA, PBS, pH7.4.
<b>Form</b>	Liquid
<b>Storage instructions</b>	Aliquot and store at -20°C. Avoid repeated freeze / thaw cycles.



MAP2 (N-terminus) antibody (E220136) at 1/1000 dilution + Mouse Brain tissue lysate: 50ug/lane.

Predicted band size: 202KDa. Observed band size: 300KDa. Additional band size: 130KDa.

**For Research Use Only**