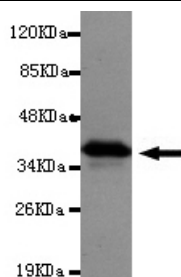




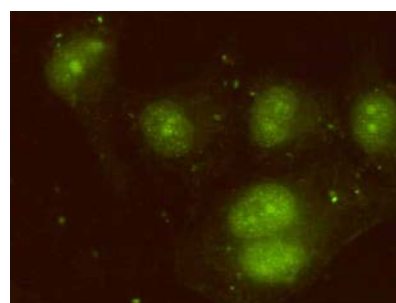
## ID2 Antibody

**E220137**

<b>Catalog Number:</b>	E220137-1, E220137-2
<b>Amount:</b>	50µg/50µl, 100µg/100µl
<b>Description</b>	Mouse monoclonal IgG to ID2
<b>GeneBank ID</b>	NM_002166
<b>Swizz-prot ID</b>	Q02363
<b>Immunogen</b>	Recombinant fragment of human ID2 (N-terminus).
<b>Reacts with</b>	Human
<b>Application notes</b>	Recommended dilutions. ELISA: 1/5000 - 1/20000. WB: 1/100 - 1/2000
<b>Cellular localization</b>	Nucleus
<b>Relevance</b>	The protein encoded by this gene belongs to the inhibitor of DNA binding (ID) family, members of which are transcriptional regulators that contain a helix-loop-helix (HLH) domain but not a basic domain. This protein may play a role in negatively regulating cell differentiation.
<b>Purity</b>	Protein G-Sepharose affinity purified
<b>Storage buffer</b>	Preservative: 0.02% Sodium Azide and 50% glycerol, 1% BSA, PBS, pH7.4.
<b>Form</b>	Liquid
<b>Storage instructions</b>	Aliquot and store at -20°C. Avoid repeated freeze / thaw cycles.



ID2 (N-terminus) antibody (E220137) at 1/2000 dilution + recombinant ID2 protein with a DsbA tag. Predicted band size: 37kDa. Observed band size: 37kDa.



Immunocytochemistry of HeLa cells using anti- ID2 (N-terminus) antibody (E220137) diluted 1:200.

**For Research Use Only**

**For Research Use Only**