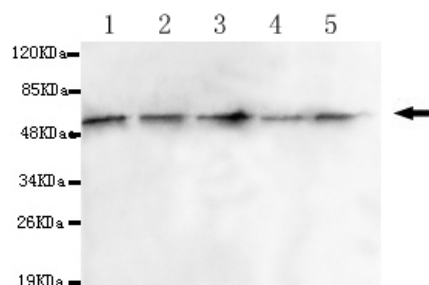




CASP8 Antibody

E220139

Catalog Number:	E220139-1, E220139-2
Amount:	50µg/50µl, 100µg/100µl
Description	Mouse monoclonal IgG to CASP8
GeneBank ID	NM_001080125.1
Swizz-prot ID	Q14790
Immunogen	A Synthetic peptide of human CASP8 (C-terminus).
Reacts with	Human
Application notes	Recommended dilutions. ELISA: 1/5000 - 1/20000. WB: 1/100 - 1/2000.
Cellular localization	Cytoplasm
Relevance	This gene encodes a member of the cysteine-aspartic acid protease (caspase) family. Sequential activation of caspases plays a central role in the execution-phase of cell apoptosis.
Purity	Protein G-Sepharose affinity purified.
Storage buffer	Preservative: 0.02% Sodium Azide and 50% glycerol, 1% BSA, PBS, pH7.4.
Form	Liquid
Storage instructions	Aliquot and store at -20°C. Avoid repeated freeze / thaw cycles.



CASP8 (C-terminus) antibody (E220139) at 1/1000 dilution. Lane1: MOLT-4 whole cell lysate: 40ug/lane. Lane2: 293 whole cell lysate: 40ug/lane. Lane3: Jurkat whole cell lysate: 40ug/lane. Lane4: MCF7 whole cell lysate: 40ug/lane. Lane5: HeLa whole cell lysate: 40ug/lane. Predicted band size: 55KDa. Observed band size: 55KDa.

For Research Use Only