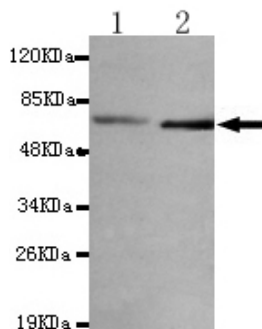




CTNNB1 Antibody

E220140

Catalog Number:	E220140-1, E220140-2
Amount:	50µg/50µl, 100µg/100µl
Description	Mouse monoclonal IgG to CTNNB1
GeneBank ID	NM_001098210.1
Swizz-prot ID	E35222
Immunogen	A Synthetic peptide of human CTNNB1 (N-terminus).
Reacts with	Human
Application notes	Recommended dilutions. ELISA: 1/5000 - 1/20000. WB: 1/100 - 1/2000.
Cellular localization	Plasma membrane
Relevance	The protein encoded by this gene is part of a complex of proteins that constitute adherens junctions (AJs). AJs are necessary for the creation and maintenance of epithelial cell layers by regulating cell growth and adhesion between cells. The encoded protein also anchors the actin cytoskeleton and may be responsible for transmitting the contact inhibition signal that causes cells to stop dividing once the epithelial sheet is complete.
Purity	Protein G-Sepharose affinity purified.
Storage buffer	Preservative: 0.02% Sodium Azide and 50% glycerol, 1% BSA, PBS, pH7.4.
Form	Liquid
Storage instructions	Aliquot and store at -20°C. Avoid repeated freeze / thaw cycles.



CTNNB1 (N-terminus) antibody (E220140) at 1/1000 dilution. Lane1: 293 whole cell lysate 40ug/lane. Lane2: HeLa whole cell lysate 40ug/lane. Predicted band size: 95KDa. Observed band size: 75KDa.

For Research Use Only