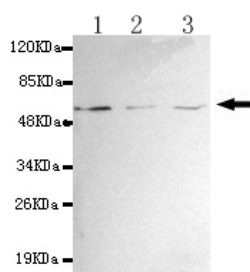




## PPM1B Antibody

**E220141**

<b>Catalog Number</b>	E220141-1, E220141-2
<b>Amount</b>	50µg/50µl, 100µg/100µl
<b>Description</b>	Mouse monoclonal IgG to PPM1B
<b>GeneBank ID</b>	NM_002706.4
<b>Swizz-prot ID</b>	O75688
<b>Immunogen</b>	Recombinant fragment of human PPM1B (N-terminus).
<b>Reacts with</b>	Human
<b>Application notes</b>	Recommended dilutions. ELISA: 1/5000 - 1/20000. WB: 1/100 - 1/2000.
<b>Cellular localization</b>	Cytoplasm
<b>Relevance</b>	This phosphatase has been shown to dephosphorylate cyclin-dependent kinases (CDKs), and thus may be involved in cell cycle control. Overexpression of this phosphatase is reported to cause cell-growth arrest or cell death.
<b>Purity</b>	Protein G-Sepharose affinity purified.
<b>Storage buffer</b>	Preservative: 0.02% Sodium Azide and 50% glycerol, 1% BSA, PBS, pH7.4.
<b>Form</b>	Liquid
<b>Storage instructions</b>	Aliquot and store at -20°C. Avoid repeated freeze / thaw cycles.



PPM1B (N-terminus) antibody (E220141) at 1/1000 dilution. Lane1: MCF7 whole cell lysate: 40ug/lane. Lane2: 293T whole cell lysate: 40ug/lane. Lane3: Hela whole cell lysate: 40ug/lane. Predicted band size: 53KDa. Observed band size: 53KDa.

**For Research Use Only**