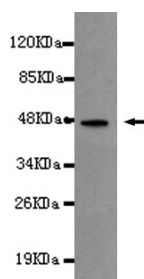




## NOTCH1 Antibody

**E220147**

|                              |   |
|------------------------------|---|
| <b>Catalog Number</b>        | E220147-1, E220147-2  |
| <b>Amount</b>                | 50µg/50µl, 100µg/100µl  |
| <b>Description</b>           | Mouse monoclonal IgG to NOTCH1  |
| <b>GeneBank ID</b>           | NM_017617   |
| <b>Swizz-prot ID</b>         | P46531  |
| <b>Immunogen</b>             | Recombinant fragment of human NOTCH1 (N-terminus).  |
| <b>Reacts with</b>           | Human   |
| <b>Application notes</b>     | Recommended dilutions. ELISA: 1/5000 - 1/20000. WB: 1/100 - 1/2000  |
| <b>Cellular localization</b> | Cell membrane   |
| <b>Relevance</b>             | This gene encodes a member of the Notch family. Members of this Type 1 transmembrane protein family share structural characteristics including an extracellular domain consisting of multiple epidermal growth factor-like (EGF) repeats, and an intracellular domain consisting of multiple, different domain types. |
| <b>Purity</b>                | Protein G-Sepharose affinity purified   |
| <b>Storage buffer</b>        | Preservative: 0.02% Sodium Azide and 50% glycerol, 1% BSA, PBS, pH7.4.  |
| <b>Form</b>                  | Liquid  |
| <b>Storage instructions</b>  | Aliquot and store at -20°C. Avoid repeated freeze / thaw cycles.  |



NOTCH1 (N-terminus) antibody (E220147) at 1/2000 dilution + recombinant immunogen with a DsbA tag.  
Predicted band size: 46KDa. Observed band size: 46KDa.

**For Research Use Only**