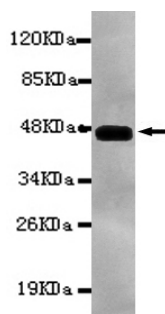




PRKCB Antibody

E220148

Catalog Number	E220148-1, E220148-2
Amount	50µg/50µl, 100µg/100µl
Description	Mouse monoclonal IgG to PRKCB
GeneBank ID	NM_005257.4
Swizz-prot ID	P05771
Immunogen	Recombinant fragment of human PRKCB (C-terminus).
Reacts with	Human
Application notes	Recommended dilutions. ELISA: 1/5000 - 1/20000. WB: 1/100 - 1/2000.
Cellular localization	Cytoplasm
Relevance	Protein kinase C (PKC) is a family of serine- and threonine-specific protein kinases that can be activated by calcium and second messenger diacylglycerol. PKC family members also serve as major receptors for phorbol esters, a class of tumor promoters.
Purity	Protein G-Sepharose affinity purified.
Storage buffer	Preservative: 0.02% Sodium Azide and 50% glycerol, 1% BSA, PBS, pH7.4.
Form	Liquid
Storage instructions	Aliquot and store at -20°C. Avoid repeated freeze / thaw cycles.



PRKCB (C-terminus) antibody (E220148) at 1/2000 dilution + recombinant immunogen with a DsbA tag.
Predicted band size: 45kDa. Observed band size: 45kDa.

For Research Use Only