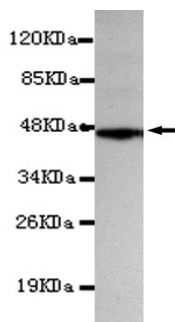




AMY1C Antibody

E220155

| | |
|------------------------------|---|
| Catalog Number | E220155-1, E220155-2 |
| Amount | 50µg/50µl, 100µg/100µl |
| Description | Mouse monoclonal IgG to AMY1C |
| GeneBank ID | NM_001008219.1 |
| Swizz-prot ID | P04745 |
| Immunogen | Recombinant fragment of human AMY1C (N-terminus). |
| Reacts with | Human |
| Application notes | Recommended dilutions. ELISA: 1/5000 - 1/20000. WB: 1/100 - 1/2000. |
| Cellular localization | Secreted |
| Relevance | Amylases are secreted proteins that hydrolyze 1,4-alpha-glucoside bonds in oligosaccharides and polysaccharides, and thus catalyze the first step in digestion of dietary starch and glycogen. This gene encodes an amylase isoenzyme produced by the salivary gland. |
| Purity | Protein G-Sepharose affinity purified |
| Storage buffer | Preservative: 0.02% Sodium Azide and 50% glycerol, 1% BSA, PBS, pH7.4. |
| Form | Liquid |
| Storage instructions | Aliquot and store at -20°C. Avoid repeated freeze / thaw cycles. |



AMY1C (N-terminus) antibody (E220155) at 1/2000 dilution + recombinant immunogen with a GST tag.
Predicted band size: 45 kDa. Observed band size: 45 kDa.

For Research Use Only