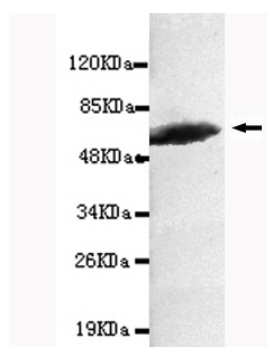




KRT7 Antibody

E220156

Catalog Number	E220156-1, E220156-2
Amount	50µg/50µl, 100µg/100µl
Description	Mouse monoclonal IgG to KRT7
GeneBank ID	NM_005556.3
Swizz-prot ID	P08729
Immunogen	Recombinant fragment of human KRT7 (C-terminus).
Reacts with	Human
Application notes	Recommended dilutions. ELISA: 1/5000 - 1/20000. WB: 1/100 - 1/2000.
Cellular localization	Cytoplasm
Relevance	The protein encoded by this gene is a member of the keratin gene family. The genes encoding the type II cytokeratins are clustered in a region of chromosome 12q12-q13.
Purity	Protein G-Sepharose affinity purified.
Storage buffer	Preservative: 0.02% Sodium Azide and 50% glycerol, 1% BSA, PBS, pH7.4.
Form	Liquid
Storage instructions	Aliquot and store at -20°C. Avoid repeated freeze / thaw cycles.



KRT7 (C-terminus) antibody (E220156) at 1/1000 dilution + HeLa whole cell lysate 40ug/Lane. Predicted band size: 51KDa. Observed band size: 55KDa.

For Research Use Only