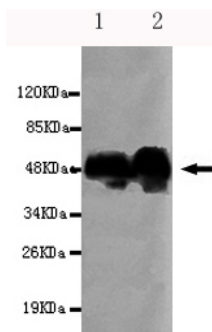




## PDHA1 Antibody

**E220157**

<b>Catalog Number</b>	E220157-1, E220157-2
<b>Amount</b>	50µg/50µl, 100µg/100µl
<b>Description</b>	Mouse monoclonal IgG to PDHA1
<b>GeneBank ID</b>	NM_000284.3
<b>Swizz-prot ID</b>	P08559
<b>Immunogen</b>	Recombinant fragment of human PDHA1 (C-terminus).
<b>Reacts with</b>	Human
<b>Application notes</b>	Recommended dilutions. ELISA: 1/5000 - 1/20000. WB: 1/100 - 1/2000
<b>Cellular localization</b>	Mitochondrion
<b>Relevance</b>	The pyruvate dehydrogenase (PDH) complex is a nuclear-encoded mitochondrial multienzyme complex that catalyzes the overall conversion of pyruvate to acetyl-CoA and CO <sub>2</sub> , and provides the primary link between glycolysis and the tricarboxylic acid (TCA) cycle.
<b>Purity</b>	Protein G-Sepharose affinity purified
<b>Storage buffer</b>	Preservative: 0.02% Sodium Azide and 50% glycerol, 1% BSA, PBS, pH7.4.
<b>Form</b>	Liquid
<b>Storage instructions</b>	Aliquot and store at -20°C. Avoid repeated freeze / thaw cycles.



PDHA1 (C-terminus) antibody (E220157) at 1/1000 dilution. Lane1: A549 whole cell lysate 40ug/Lane.  
Lane2: HeLa whole cell lysate 40ug/Lane. Predicted band size: 43KDa. Observed band size: 50KDa.

**For Research Use Only**