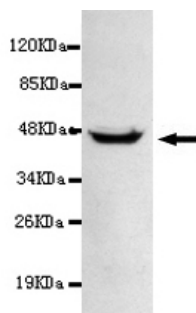




## PPM1A Antibody

**E220160**

<b>Catalog Number</b>	E220160-1, E220160-2
<b>Amount</b>	50µg/50µl, 100µg/100µl
<b>Description</b>	Mouse monoclonal IgG to PPM1A
<b>GeneBank ID</b>	NM_177952.1
<b>Swizz-prot ID</b>	P35813
<b>Immunogen</b>	Recombinant fragment of human PPM1A (N-terminus).
<b>Reacts with</b>	Human
<b>Application notes</b>	Recommended dilutions. ELISA: 1/5000 - 1/20000. WB: 1/100 - 1/2000.
<b>Cellular localization</b>	Cytoplasm, Nucleus
<b>Relevance</b>	The protein encoded by this gene is a member of the PP2C family of Ser/Thr protein phosphatases. PP2C family members are known to be negative regulators of cell stress response pathways. This phosphatase dephosphorylates, and negatively regulates the activities of, MAP kinases and MAP kinase kinases.
<b>Purity</b>	Protein G-Sepharose affinity purified.
<b>Storage buffer</b>	Preservative: 0.02% Sodium Azide and 50% glycerol, 1% BSA, PBS, pH7.4.
<b>Form</b>	Liquid
<b>Storage instructions</b>	Aliquot and store at -20°C. Avoid repeated freeze / thaw cycles.



PPM1A (N-terminus) antibody (E220160) at 1/1000 dilution + HeLa whole cell lysate 40ug/Lane.

Predicted band size: 42KDa. Observed band size: 42KDa.

**For Research Use Only**