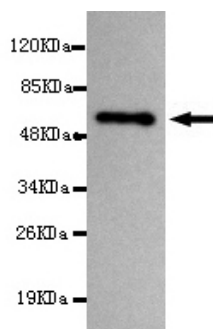




CARM1 Antibody

E220162

Catalog Number	E220162-1, E220162-2
Amount	50µg/50µl, 100µg/100µl
Description	Mouse monoclonal IgG to CARM1
GeneBank ID	NM_199141.1
Swizz-prot ID	Q86X55
Immunogen	Recombinant fragment of human CARM1 (C-terminus).
Reacts with	Human
Application notes	Recommended dilutions. ELISA: 1/5000 - 1/20000. WB: 1/100 - 1/2000.
Cellular localization	Nucleus.Cytoplasm
Relevance	Protein arginine N-methyltransferases, such as CARM1, catalyze the transfer of a methyl group from S-adenosyl-L-methionine to the side chain nitrogens of arginine residues within proteins to form methylated arginine derivatives and S-adenosyl-L-homocysteine.
Purity	Protein G-Sepharose affinity purified
Storage buffer	Preservative: 0.02% Sodium Azide and 50% glycerol, 1% BSA, PBS, pH7.4.
Storage instructions	Aliquot and store at -20°C. Avoid repeated freeze / thaw cycles.



CARM1 (C-terminus) antibody (E220162) at 1/1000 dilution + K562 whole cell lysate 40ug/Lane.
Predicted band size: 63KDa. Observed band size: 63KDa.

For Research Use Only