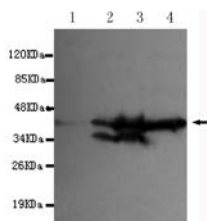




## EPCAM Antibody

**E220165**

<b>Catalog Number</b>	E220165-1, E220165-2
<b>Amount</b>	50µg/50µl, 100µg/100µl
<b>Description</b>	Mouse monoclonal IgG to EPCAM
<b>GeneBank ID</b>	NM_002354.1
<b>Swizz-prot ID</b>	P16422
<b>Immunogen</b>	Recombinant fragment of human EPCAM (N-terminus).
<b>Reacts with</b>	Human
<b>Application notes</b>	Recommended dilutions. ELISA: 1/5000 - 1/20000. WB: 1/100 - 1/2000.
<b>Cellular localization</b>	Plasma membrane
<b>Relevance</b>	This gene encodes a carcinoma-associated antigen and is a member of a family that includes at least two type I membrane proteins. The antigen is being used as a target for immunotherapy treatment of human carcinomas. Mutations in this gene result in congenital tufting enteropathy.
<b>Purity</b>	Protein G-Sepharose affinity purified.
<b>Storage buffer</b>	Preservative: 0.02% Sodium Azide and 50% glycerol, 1% BSA, PBS, pH7.4.
<b>Storage instructions</b>	Aliquot and store at -20°C. Avoid repeated freeze / thaw cycles.



EPCAM (N-terminus) antibody (E220165) at 1/1000 dilution. Lane1: HepG-2 whole cell lysate 40ug/Lane. Lane2: A431 whole cell lysate 40ug/Lane. Lane3: MCF7 whole cell lysate 40ug/Lane. Lane4: HCT116 whole cell lysate 40ug/Lane. Predicted band size: 39KDa. Observed band size: 39KDa. Addition band size: 34KDa.

**For Research Use Only**